



*Welcome to Unzwa Safaris*

## Accomodation and hospitality in the Soutpansberg Mountain

Located on Hoogland Farm in Vivo, Unzwa Safaris offers international and local guests a «Bushveld Breakaway». We have a fully equipped lodge with private rooms, kitchen and a lapa/bar area. In the mountain we have our bush camp with a beautiful view and nice sunsets.

Other facilities is a swimming pool, outdoor gym, minigolf (put-put), Jukskei and we can offer game drives and bush walks.



[omdoseth@gmail.com](mailto:omdoseth@gmail.com)

Cell phone 082 513 5133

Email [safari@unzwa.com](mailto:safari@unzwa.com)

## Rooms and Chalets

Our rooms are private and there is four in the main building (Room 1-4) , two separate rooms with own entrance in a chalet by the pool (Room 5 and 6), one private chalet (Room 7) and a luxury tent. All rooms are equipped with a coffee station and all are air-conditioned (the tent has an air cooler).



**Room 1**  
Three single beds  
Private bathroom with shower, basin and toilet.

**Room 2**  
Two single beds  
Shares bath with room 4. The bath has a shower, basin and toilet.



**Room 3**  
Two single beds  
Private bathroom with shower, basin and toilet.

**Room 4**  
Two single beds  
Shares bath with room 2. The bath has a shower, basin and toilet.



**Room 5**  
Two single beds  
Private bathroom with shower, basin and toilet.

**Room 6**  
Two single beds  
Private bathroom with shower, basin and toilet.



**Room 7**  
One double bed  
Private bathroom with shower, basin and toilet.

**Luxury Tent**  
Two single beds  
Private bathroom with shower, basin and toilet.



# The «Bird Nest»

This is a 150 square meter apartment building with a kitchenette and a living room, four bedrooms where two and two rooms is connected with a door between. Two big bathrooms.

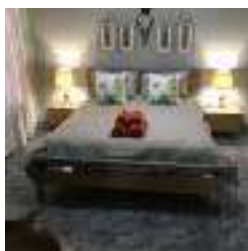


## Room 8

One double bed  
Connected with room 9 and shared bathroom with shower, basin and toilet. Connection door can be locked

## Room 9

Two single beds  
Connected with room 8 and shared bathroom with shower, basin and toilet. Connection door can be locked



## Room 10

One double bed  
Connected with room 11 and shared bathroom with shower, basin and toilet. Connection door can be locked

## Room 11

Two single beds  
Connected with room 10 and shared bathroom with shower, basin and toilet. Connection door can be locked



## General information

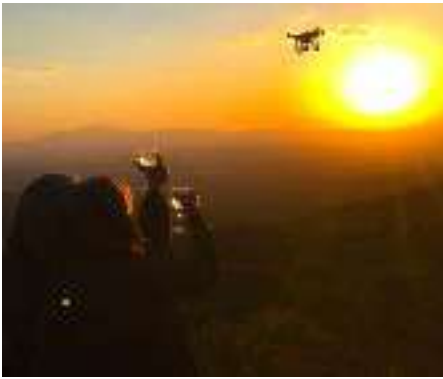
In some of the rooms there can be placed extra mattresses at a cost of R 150 pr. mattress

Bed linens and towels are included

Rooms are serviced on a daily base

A 50% deposit must be placed to secure the booking and final payment 14 days before arrival. This is non-refundable.





### Kitchen

- ✓ Breakfast served 0700 - 0900
  - ✓ Lunch served 1200 - 1400
  - ✓ Dinner served 1900 - 2100
- (All meals to be pre booked )

### Bar/Lapa

- ✓ Coffee station
- ✓ Available fridge for own drinks
- ✓ Attended bar can be arranged

### Prices

- ✓ Email [safari@unzwa.com](mailto:safari@unzwa.com) or phone 082 513 5133 for a quote.

All meals to be served with juice and table water. Unzwa currently do not offer self catering with use of our kitchen. However we can let guests use our braai facilities. Contact manager for more information.

## THE ROAD TO UNZWA

GPS : 23°03'15.2"S 29°19'47.2"E

### FROM POLOKWANE

Take N1 to Polokwane

After passing Builders Warehouse as You enter Polokwane go left in the roundabout.

Follow Nelson Mandela Drive. After 5 KM from the roundabout, turn right on Vermikuliet Street.

Turn onto R521 (Dendron Road) Sign says Alldays.

At Vivo, pass the Viva Garage and take the first road (R522) to the right. Signs says Louis Trichardt.

Follow R 522 for 6 KM and Unzwa will be on the left. There are two big signs with name and logo.



### FROM LOUIS TRICHARDT

From N1, take Rissik street.

Follow R521 with signs to Vivo. When passing the last robot at Krogh Street drive 65 KM and Unzwa will be on the right. There are two big signs with name and logo.

